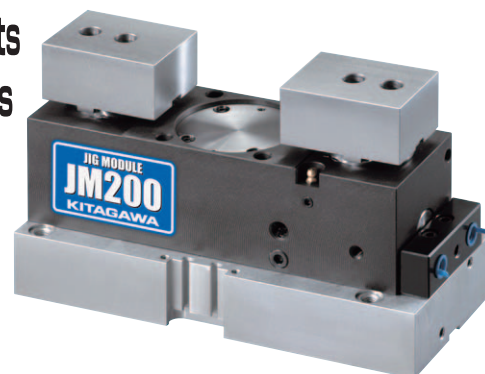




**WORK GRIPPER**

# Jig Module JM200

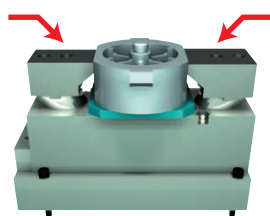
Securely grips a wide range of irregularly shaped components  
New clamping system accommodates a variety of workpieces



- Option of lock valve mechanism meaning that during machining work can be held without air line
- Centralizing or compensating is switchable
- Face grip (end grip) is possible
- Seating can be checked automatically

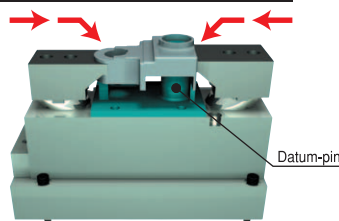
One unit is equipped with three gripping functions.

**Centralizing Grip Centralizing**



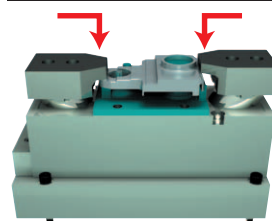
External gripping by pull down

**Center compensation grip Compensating**



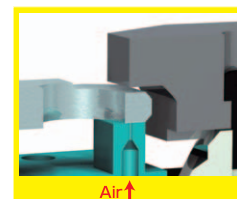
Compensating gripping using pin locators and pull down

**End face grip Face Grip**

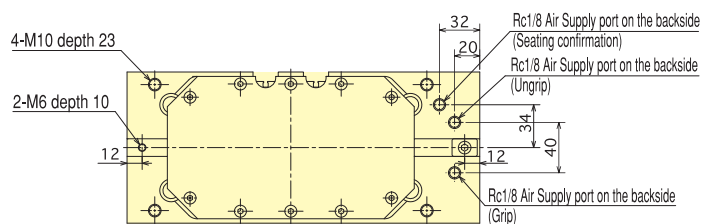
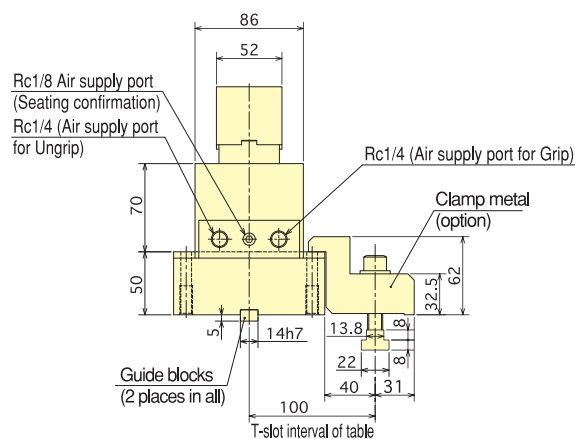
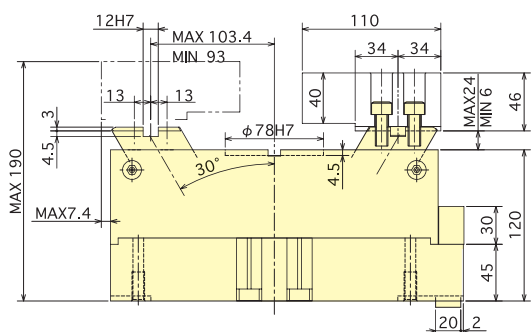
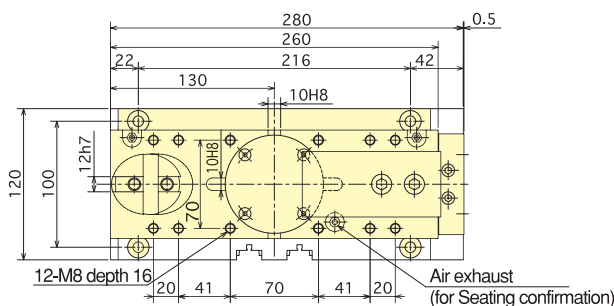


Face gripping by pull down

Seating can be checked



**Dimensional Drawings**



Note : Grip metals for mounting main part can be optionally offered.

**Specifications**

Cylinder stroke (mm)	Jaw stroke (mm)		Max. Gripping force kN (kgf)		Min. Gripping force kN (kgf)		Max. Oscillating amount (mm)		Work size (mm)		Weight (kg)	Max. air pressure MPa (kgf/cm <sup>2</sup> )	Max. air pressure MPa (kgf/cm <sup>2</sup> )
	Centering/Compensation	Face grip	Centering/Compensation	Face grip	Centering/Compensation	Face grip	Centering/Compensation	Face grip	Centering/Compensation	Face grip			
18	20.8	18	9.0(918)	5.5(561)	3.0(306)	1.8(184)	1.5	2.5	40~200	40~150	19.0	0.6(6.0)	0.2(2.0)