

NC ROTARY TABLE

Low centre line tilting NC Rotary Table TT140

Tilting type to suit 5 axis machining with decreased input on the Z axis

- Wide machining area and tilting axis index 220° ($\pm 110^\circ$)
- Compact and high speed
Ideal for use on small machining centres
- Highest clamping torque in its class
- Built in rotary joint (option) allows simple and secure jig piping
- Table surface on tilt axis centre line
- Pneumatic clamping mechanism

*CE correspondence

※In specification with the foreign trade control ordinance, permission of the ministry of economy, trade and industry is required when exporting twin axis products overseas.

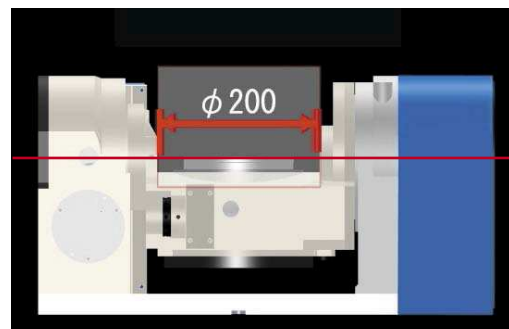
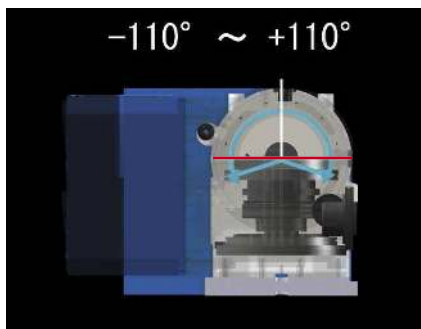


TT140

Wide Machining Area



● Tilting axis index 220°



● Max. dia. $\phi 200$ mm of loadable work

Complete built-in rotary joint (option)

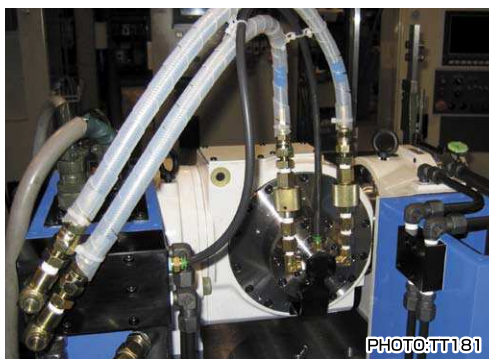
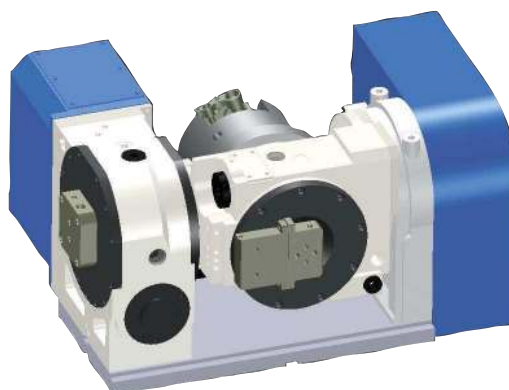


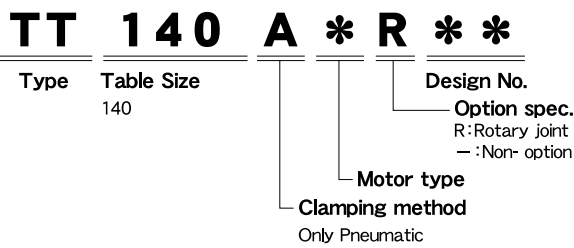
PHOTO:TT181

Simplified Pipework

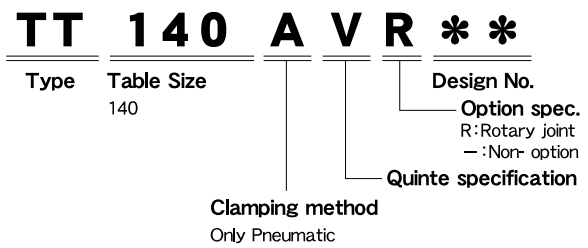


● Installation of optional rotary joint

4th axis specifications



M signal specification



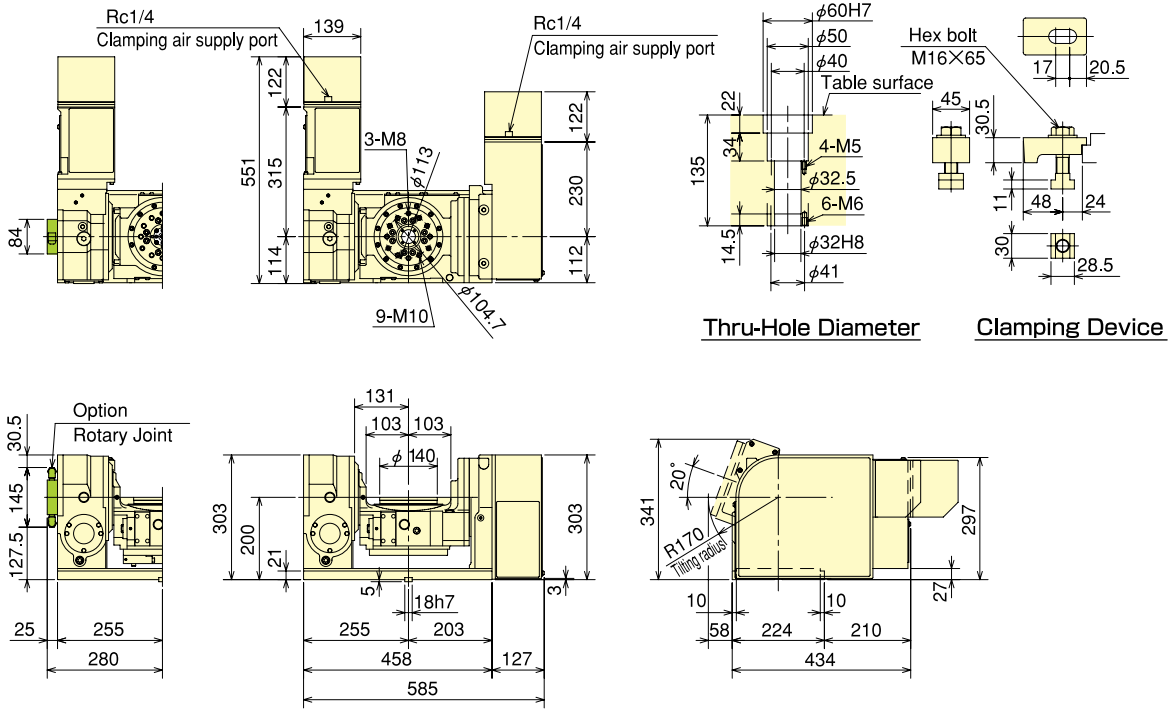
Specifications

Model		TT140	
Tilting angle		- 110° ~ + 110°	
Table dia (mm)		φ 140	
Register diameter on Face Plate (mm)		φ 60H7	
Spindle through hole diameter (mm)		φ 32	
Centre Height (mm)		200	
Clamping method		Pneumatic	
Clamping torque (N·m) (In pneumatic 0.5MPa)	Rotating axis	280	
	Tilting axis	500	
Motor axis reduced inertia (kg·m ²)	Rotating axis	0.000269	
	Tilting axis	0.000288	
Servomotor (for FANUC specification)		α iF 2/5000	
Gear ratio	Rotating axis	1/72	
	Tilting axis	1/180	
Max. spindle speed	for FANUC specification	Rotating axis (for min ¹ /Motor3000min ⁻¹)	41.6
		Tilting axis (for min ¹ /Motor3000min ⁻¹)	16.6
	M signal specification	Rotating axis (for min ¹ /Motor3000min ⁻¹)	41.6
		Tilting axis (for min ¹ /Motor3000min ⁻¹)	16.6
Allowable work inertia (kg·m ²)		0.12	
Indexing accuracy (sec)	Rotating axis	30	
	Tilting axis	60	
Repeatability (sec)		4	
Mass of product (kg)		158	
Built-in rotary joint (as an option · P97reference)		RJ32TT140 (Hydraulic/Pneumatic 4-port)	
Allowable Load	at horizontal (kg)	50	
	at tilted (kg)	30	
Allowable load (When clamped to table)	F (kN)	4	
	F×L (N·m)	500	
	F×L (N·m)	280	
Allowable cutting torque	T (N·m)	190	
Moment of tilting weight capacity	W×L (kgf·m)	11	

Note) 1. The switch for pressure checking is incorporated to all series except TC/DM of NC tables. 2. The solenoid valve for the table clamp is incorporated. 3. Neither cable nor hose is fitted between NC rotary table and machine tool... 4. Each product mass is determined by a Kitagawa M signal spec.

■Dimensions [4th axis specifications]

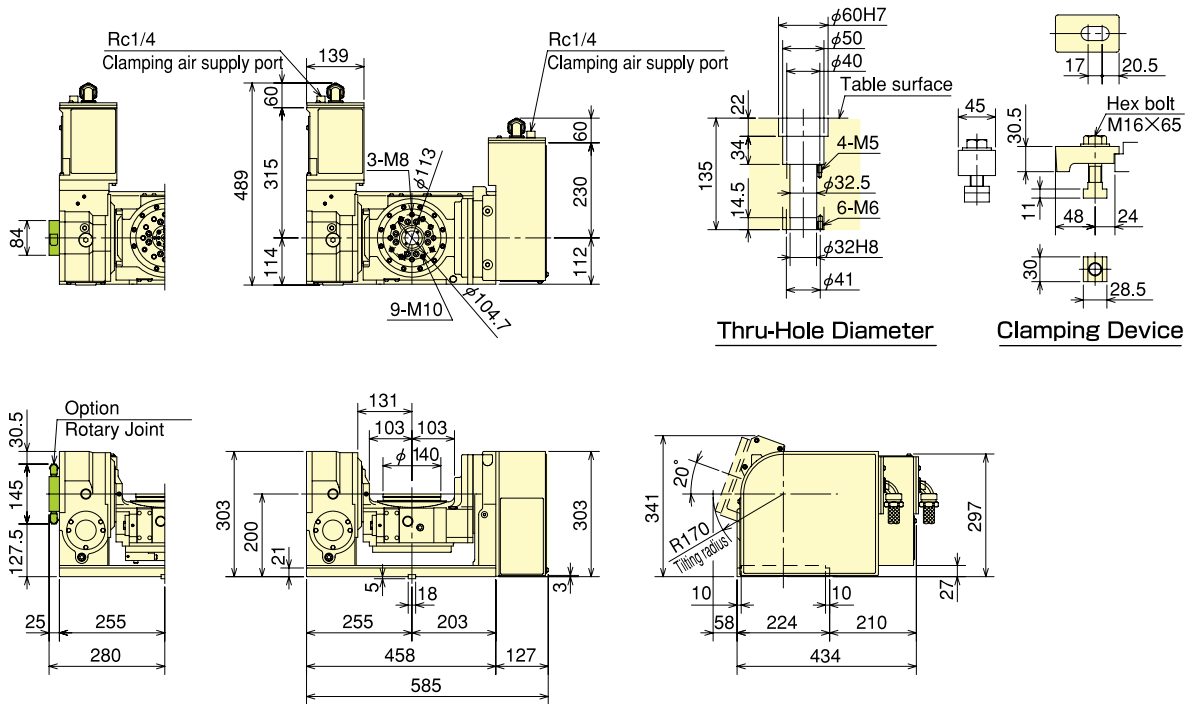
TT140



※The above dimensions are the same as FANUC spec.
Those dimensions may vary from motor to motor that is mounted.

■Dimensions [Kitagawa own controller] *The dimensions may vary from motor to motor that is mounted.

TT140



*The above dimensions are the same as FANUC spec.
Those dimensions may vary from motor to motor that is mounted.

DATA Tilting NC table • Work loadable area

TT140

