



**CHUCK**

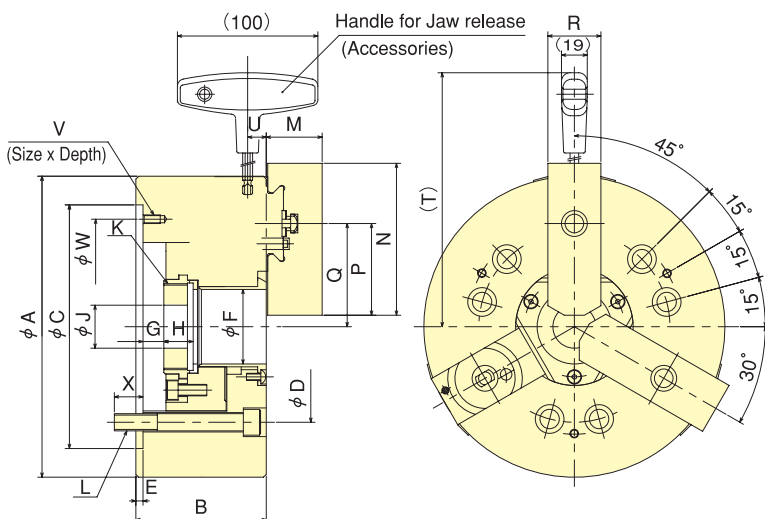
# Quick Jaw-Change Chuck QB300 series

Quick and Easy Top Jaw replacement  
Optimum QB300 chuck for high-mix low-volume production

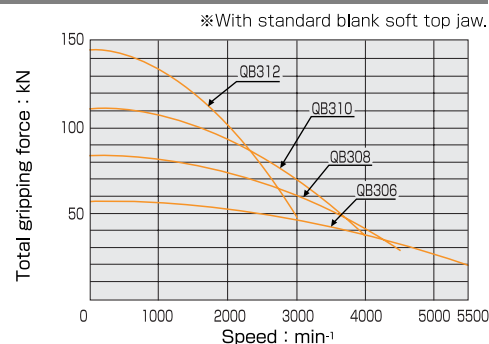


Standard Chuck

## Dimensional Drawings



## Gripping Characteristic Graphs



Note) Please contact our engineering regarding casting and forgin material machining.

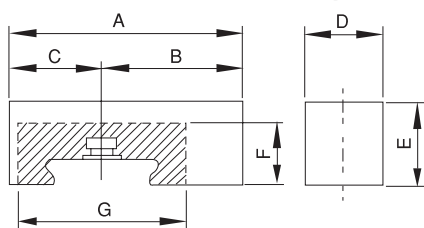
## Dimensions ※Blank draw nut equipped.

Dimensions Model	A	B	C (H6)	D	E	F	G max.	G min.	H	J	K max.	L	M	N	P	Q max.	Q min.	R	S	T	U	V	W	X
QB306	169	81	140	104.8	5	45	11	-1	19	20	M55x2.0	6-M10	31	90	54	58.5	55.75	32	36	192.5	13	M6x10	116	16
QB308	210	91	170	133.4	5	52	14.5	-1.5	20.5	30	M60x2.0	6-M12	39	106	64	72	68.3	37	42	220.7	13	M6x12	150	20
QB310	254	100	220	171.4	5	75	8.5	-10.5	25	45	M85x2.0	6-M16	43	125	76	88	83.6	42	49	242	15.5	M8x15	190	22
QB312	304	110	220	171.4	6	91	8	-15	28	50	M100x2.0	6-M16	51	139	90	106.3	101	42	49	269	15.5	M8x15	190	23

## Specifications ※Max speed is shown using actual test data.

Specifications Model	Thru-Hole mm	Plunger Stroke mm	Outer gripping range mm	Jaw Stroke (diameter) mm	Max. Draw Bar Pull Force kN (kgf)	Max. Gripping Force kN (kgf)	Max. Speed min <sup>-1</sup> (r.p.m)	Net Weight with Soft top jaws kg	Moment of inertia kg·m <sup>2</sup>	Matching Cylinder	Max. pressure MPa(kgf/cm <sup>2</sup> )	Matching Soft top jaw
QB306	45	12	φ10~φ140	5.5	22 (2243)	57 (5812)	5500	12.6	0.058	S1246	2.8 (28.6)	SB06BB
QB308	52	16	φ18~φ180	7.4	34 (3467)	84 (8565)	4500	23.2	0.173	S1552	2.6 (26.5)	SB08BB
QB310	75	19	φ22~φ210	8.8	43 (4385)	111 (11319)	4000	35	0.318	S1875	2.7 (27.5)	SB10BB
QB312	91	23	φ30~φ250	10.6	55 (5608)	144 (14684)	3000	56	0.745	S2091	2.7 (27.5)	SB12BB

## Soft Top Jaw Dimensional Drawings



Note) No modification is allowed in shaded area.

## Dimensions for Soft Top Jaw

Soft Jaw Model Dimensions	6"		8"		10"		12"	
	SB06BB	SB06BB-040	SB08BB	SB08BB-056	SB10BB	SB10BB-060	SB12BB	SB12BB-070
A	90	90	106	106	125	125	139	139
B	54	54	64	64	76	76	90	90
C	36	36	42	42	49	49	49	49
D	32	32	37	37	42	42	42	42
E	30	40	38	56	42	60	50	70
F	24	24	28	28	31	31	34	34
G	68	68	76	76	88	88	92	92
Min. gripper range	10	10	18	18	22	22	30	30