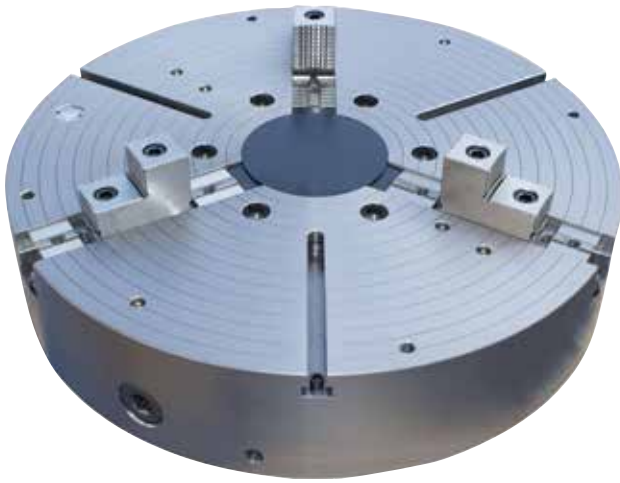


SRK/SRV SERIES LARGE 3 JAW CHUCK

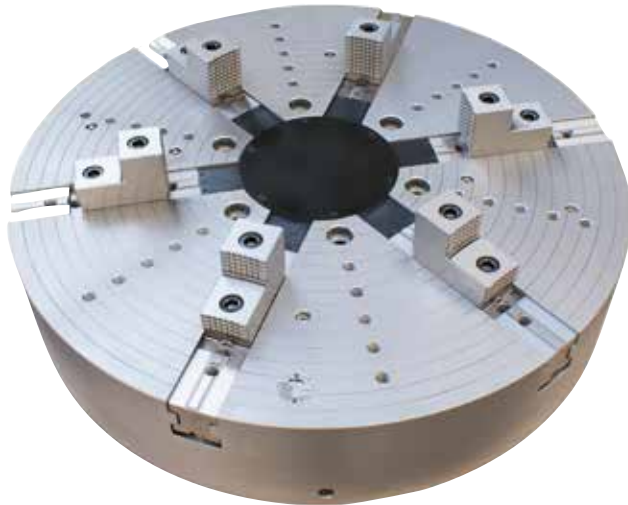
THE
BEST.

Large 3 Jaw, Self-Centering, Scroll Chucks with Cover



The SRK/SRV Series are large, 3 jaw, self centering scroll chucks with a cover to protect operating mechanisms from debris, chips and coolant contamination.

- Chuck sizes: 21" to 71" (535 to 1,800 mm)
- SRK-3J: T groove specifications: 3 jaw type
- SRK-6J: T groove specifications: 6 jaw type
- SRV-3J: Tap specification: 3 jaw type
- SRV-6J: Tape specification: 6 jaw type



LARGE

3 JAW

SCROLL

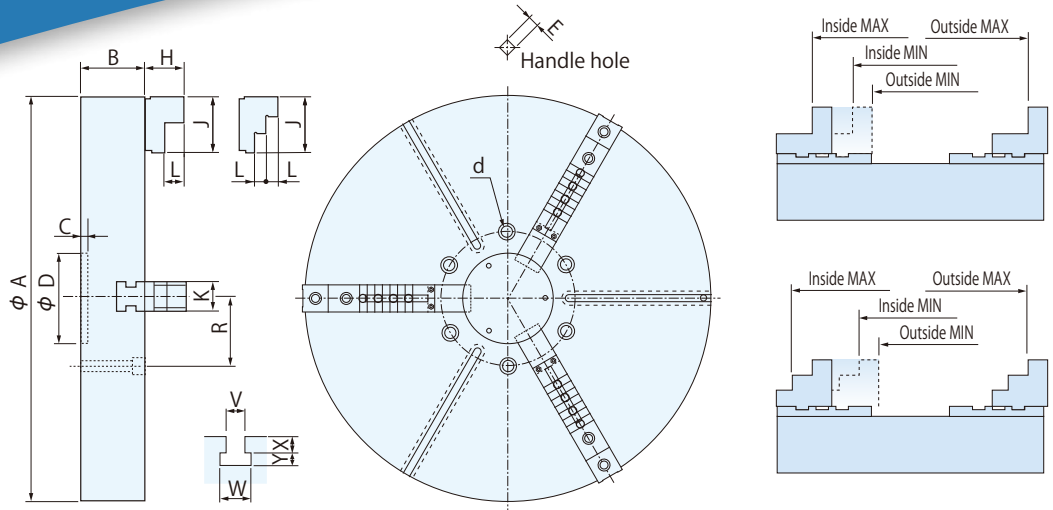
CHUCKS

kitagawa[®]
NORTHTECH
The Best Workholding.

SRK/SRV SERIES TECHNICAL SPECIFICATIONS

THE BEST.

Large 3 Jaw,
Self-Centering,
Scroll Chucks
with Chip Cover



| Model | A | B | C | Dh7 | E | H | J | K | L | R | d | V | W | X | Y |
|--------------|------|-----|----|-----|------|-----|-----|----|------|-------|-------|----|----|----|------|
| SRK535ST-3J | 535 | 140 | 20 | 200 | 19 | 75 | 135 | 50 | 17.5 | 117.5 | 6-M20 | 16 | 27 | 16 | 11 |
| SRK610ST-3J | 610 | 167 | 20 | 200 | 22 | 75 | 135 | 60 | 17.5 | 117.5 | 6-M20 | 20 | 34 | 20 | 13.5 |
| SRK710ST-3J | 710 | 167 | 20 | 200 | 22 | 75 | 135 | 60 | 17.5 | 117.5 | 6-M20 | 20 | 34 | 20 | 13.5 |
| SRK800ST-3J | 800 | 190 | 20 | 200 | 22 | 92 | 140 | 69 | 46 | 165.1 | 6-M24 | 20 | 34 | 20 | 13.5 |
| SRK915ST-3J | 915 | 200 | 20 | 200 | 25.4 | 92 | 140 | 69 | 46 | 165.1 | 6-M24 | 24 | 42 | 24 | 18 |
| SRK1000ST-3J | 1000 | 200 | 20 | 200 | 25.4 | 92 | 140 | 69 | 46 | 165.1 | 6-M24 | 24 | 42 | 24 | 18 |
| SRK1250ST-3J | 1250 | 220 | 25 | 400 | 25.4 | 100 | 170 | 79 | 50 | 231.8 | 6-M24 | 24 | 42 | 24 | 18 |
| SRK1400ST-3J | 1400 | 230 | 25 | 400 | 25.4 | 100 | 170 | 79 | 50 | 231.8 | 6-M24 | 24 | 42 | 24 | 18 |
| SRK1500ST-3J | 1500 | 240 | 25 | 500 | 25.4 | 100 | 170 | 79 | 50 | 290 | 9-M24 | 24 | 42 | 24 | 18 |
| SRK1600ST-3J | 1600 | 240 | 25 | 500 | 25.4 | 100 | 170 | 79 | 50 | 290 | 9-M24 | 24 | 42 | 24 | 18 |
| SRK1800ST-3J | 1800 | 250 | 25 | 500 | 25.4 | 100 | 170 | 79 | 50 | 290 | 9-M24 | 24 | 42 | 24 | 18 |

| Model | Static gripping force | Handle torque | Gripping range ϕ mm | | Max Rotation speed | Weight | Jaw type | Bolt for top jaw | Optional soft jaw |
|--------------|-----------------------|---------------|--------------------------|-------------|--------------------|-----------|----------|------------------|-------------------|
| | | | Outside | Inside | | | | | |
| | | | kN(kgf) | N·m (kgf·m) | MIN.-MAX. | MIN.-MAX. | | | |
| SRK535ST-3J | 72 (7300) | 372 (38) | 160-475 | 270-490 | 950 | 195 | 3-Step | M20 | SJ-150 |
| SRK610ST-3J | 73 (7500) | 392 (40) | 215-535 | 330-550 | 800 | 310 | 3-Step | M20 | SJ-155 |
| SRK710ST-3J | 73 (7500) | 392 (40) | 220-615 | 330-630 | 650 | 460 | 3-Step | M20 | SJ-155 |
| SRK800ST-3J | 73 (7500) | 490 (50) | 250-685 | 390-650 | 560 | 600 | 2-Step | M20 | SJ-160 |
| SRK915ST-3J | 78 (8000) | 490 (50) | 275-825 | 420-790 | 500 | 800 | 2-Step | M20 | SJ-160 |
| SRK1000ST-3J | 78 (8000) | 490 (50) | 275-880 | 420-850 | 470 | 900 | 2-Step | M20 | SJ-160 |
| SRK1250ST-3J | 68 (7000) | 490 (50) | 310-1120 | 465-1090 | 350 | 1500 | 2-Step | M22 | SJ-170 |
| SRK1400ST-3J | 68 (7000) | 490 (50) | 310-1270 | 465-1240 | 300 | 1750 | 2-Step | M22 | SJ-170 |
| SRK1500ST-3J | 68 (7000) | 588 (60) | 320-1370 | 475-1340 | 260 | 2150 | 2-Step | M22 | SJ-170 |
| SRK1600ST-3J | 68 (7000) | 588 (60) | 320-1470 | 475-1440 | 230 | 2600 | 2-Step | M22 | SJ-170 |
| SRK1800ST-3J | 68 (7000) | 588 (60) | 410-1675 | 560-1640 | 200 | 3300 | 2-Step | M22 | SJ-170 |

| Specification |
|--------------------------|
| SRK-3J : T-SLOT, 3-JAW |
| SRK-6J : T-SLOT, 6-JAW |
| SRV-3J : TAP-HOLE, 3-JAW |
| SRV-6J : TAP-HOLE, 6-JAW |
| SRK1800ST-3J |

Rotation speed, gripping range and weight are different depending on 3-JAW and 6-JAW.

For the details of model which isn't listed on the above table, please contact us.