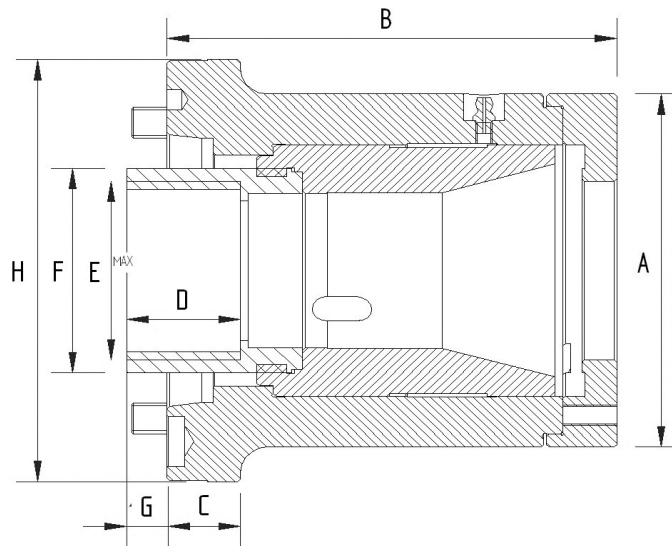


## COLLET CHUCK MODEL: CRL



### CRL Long Series Collet Chucks

- Fixed length for all second operations
- Compact design for minimum overhang
- Interchangeable with Kitagawa B200 series power chucks
- High concentric accuracy
- Supplied complete with blank connector for threading to match drawtube
- All parts made of alloy steel hardened and precision ground



SPECIFICATIONS	CRL42	CRL42A5	CRL42A6	CRL54A6	CRL60	CRL60A6	CRL60A8
Gripping Range mm	1.6 - 42	1.6 - 42	1.6 - 42	1.6 - 54	1.6 - 60	1.6 - 60	1.6 - 60
Collet Increment mm	3	3	3	3	3	3	3
Sleeve Stroke mm	7	7	7	10	7	7	7
Max Drawbar Pull kN	25	25	25	30	30	30, 33.4	33.3
Max Gripping Force kN	55	55	55	60	60	60, 56.9	58.8
Max Speed rpm	7100	7100	7100	6300	6300	6300	6300
Net Weight kg	10	9.5	10.7	15	15.2	15	18.5
Matching Cylinder	S1246	S1246	S1246	S1552/S1875	S1552/S1875	S1552/S1875	S1552/S1875
Varibore Collet Type	D-673 (DIN6343)	D-673 (DIN6343)	D-673 (DIN6343)	D-120	D-677 (DIN6343)	D-677 (DIN6343)	D-677 (DIN6343)
Spring Collet Type	173E 4728	173E 4729	173E 4730	D853	D185E 4291	D185E 4292	D185E 4293

DIMENSIONS	CRL42	CRL42A5	CRL42A6	CRL54A6	CRL60	CRL60A6	CRL60A8
Mount	140	A2-5	A2-6	A2-6	170	A2-6	A2-8
A	110	110	110	138	138	138	138
B	133	143	145	160	148	160	156
C	20	20	30	27	24	27	36
D	30	30	30	25	30	30	30
E Max	M55 X 1.5	M55 X 1.5	M55 X 1.5	M70 X 1.5	M70 X 1.5	M70 X 1.5	M70 X 1.5
F	62	62	62	80	80	80	80
G Max	11	1	-1	-2	10	-2	2
G Min	4	-6	-8	-12	3	-9	-5
H	160	135	165	165	190	165	210