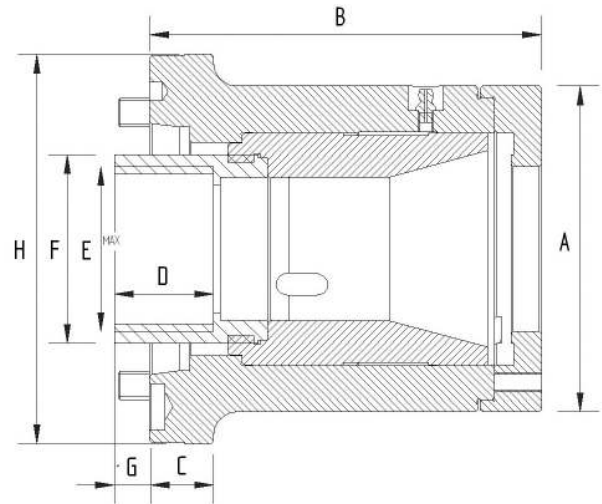
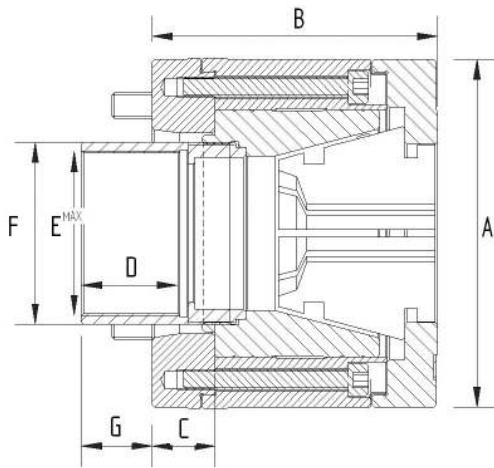


**COLLET CHUCK
MODEL: CRS**



CRS Short Series Collet Chucks

- Ultra compact chuck design for first operations
- Ideally suited for use with bar feeders
- Short length maximizes lathe work envelope
- Bolt on cap
- Uses vari-bore type collets only. CRS 36 also accepts spring collets
- Large capacity in small diameter and short length



SPECIFICATIONS	CRS 36	CRS 54A5	CRS 66	CRS 66A6	CRS 66A8
Gripping Range mm	3 -36	3 - 54	4 - 66	4 - 66	4 - 66
Collet Increment mm	2	3	3	3	3
Sleeve Stroke mm	7	10	10	10	10
Max Drawbar Pull kN	22	34	39	39	39
Max Gripping Force kN	49	60	68	68	68
Max Speed rpm	7000	6300	4500	4500	4500
Net Weight kg	8	10.5	19	24	18
Matching Cylinder	S1036	S1552/S1875	S1875	S1875	S1875
Varibore Collet Type	D671	D120	D285	D285	D285
Spring Collet	D171E	x	x	x	x

DIMENSIONS	CRS 36	CRS 54A5	CRS 66	CRS 66A6	CRS 66A8
Mount	115	A2-5	220	A2-6	A2-8
A	105	138	150	165	150
B	125	113	140	131	140
C	23	25	30	NA	30
D	18	38	66	66	66
E Max	M50 X 1.5	M65 X 1.5	M80 X 2	M80 X 2	M80 X 2
F	58	72	90	90	90
G Max	-6	28	22	29.5	21
G Min	-14	18	11	19.5	11
H	135	NA	230	166	210