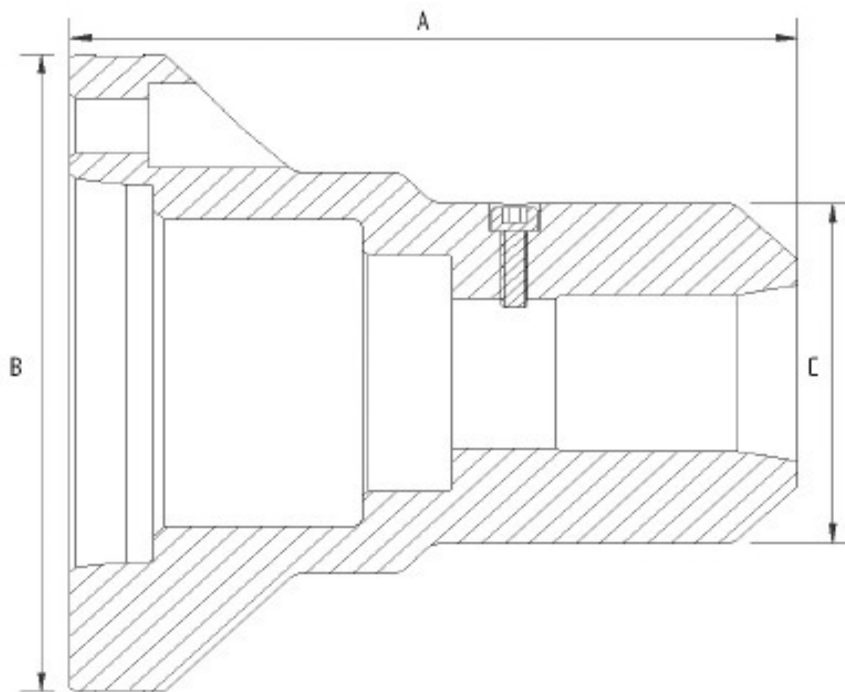


**COLLET CHUCK
MODEL: PULL BACK**



Pull Back Series Collet Chucks

- Pull back design for 1st operation
- Use 5C & 16C collets
- Ejectors available
- Collet wrench included with chuck
- Exceptional accuracy in a small package



SPECIFICATIONS	DEL 5C	DEL 16C
Gripping Range mm	.5 - 27	.5 - 42
Pull Back Ratio	1 : 3	1 : 3
Max Drawbar Pull kN	20	24
Max Speed rpm	6000	6000
Net Weight kg	7, 11	6, 8
Coll Type	5C	16C

DIMENSIONS	DEL 5C		DEL 16C	
Mount	A5	A6	A5	A6
A	138	148	152	160
B	135	165	135	165
C	72		85	