



CHUCK

Hard Jaws for Scroll Chuck HBS series

Description of Model **HBS06C**

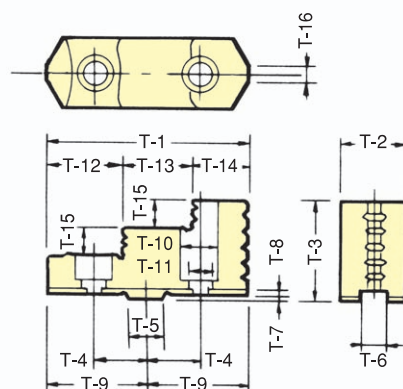
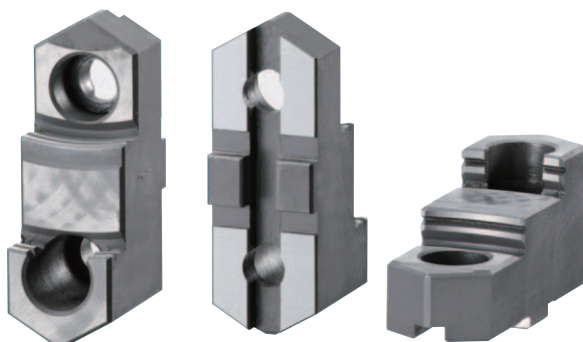
- Chuck type
C=JN
- Chuck sizes
- Hard jaw of scroll chuck



Combination Table for Hard Jaws

Hard jaw type	Adaptive chuck model
HBS06C	JN06T, JN06RA5
HBS07C	JN07T, JN07RA5, JN08RA6
HBS09C	JN09T, JN09RA6
HBS10C	JN10T, JN10RA6 (8)
HBS12C	JN12T, JN12RA6 (8)

Dimensional Drawings



Dimensions

TYPE	Chuck size	T-1	T-2	T-3	T-4	T-5	T-6	T-7	T-8	T-9	T-10	T-11	T-12	T-13	T-14	T-15	T-16	Mounting bolt
HBS06C	6	68	26	37	19.05 ^{+0.1}	12.68 ^{+0.008} _{-0.003}	7.94 ^{+0.05} ₀	3	3.5	34	14	8.5	26	21.5	20.5	8.5	2	M 8 × 20
HBS07C	7	80	28	40	22.225 ^{+0.1}	12.68 ^{+0.008} _{-0.003}	7.94 ^{+0.05} ₀	3	3.5	40	17	11	30.5	26	23.5	9.5	2	M10×20
HBS09C	9	90	32	48	26.99 ^{+0.1}	19.03 ^{+0.009} _{-0.004}	12.7 ^{+0.05} ₀	3	3.5	45	19	13	34	30	26	12	3	M12×25
HBS10C	10	100	35	52	26.99 ^{+0.1}	19.03 ^{+0.009} _{-0.004}	12.7 ^{+0.05} ₀	3	3.5	50	19	13	38	32	30	14	3	M12×25
HBS12C	12	115	40	54	31.75 ^{+0.1}	19.03 ^{+0.009} _{-0.004}	12.7 ^{+0.05} ₀	3	3.5	57.5	19	13	46	35	34	15	4	M12×25