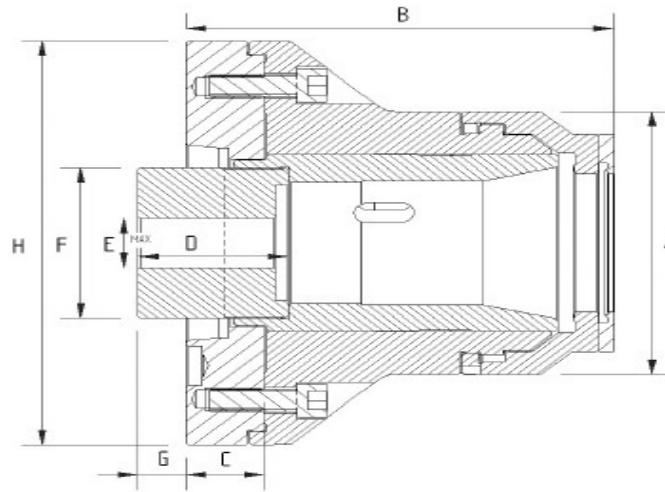


COLLET CHUCK MODEL: QCRL



Quick Change Series Collet Chucks

- Quick change design for 1st or 2nd operations
- Ideally suited for use with bar feeders
- Fixed length collet—no part movement
- Uses varibore, spring and master collets
- Exceptional accuracy in a small package



SPECIFICATIONS	QCRL42 INCH	QCRL42 DIN	QCRL 54 INCH	QCRL60 DIN
Gripping Range mm	1.6 - 42	4 - 42	1.6 - 54	4 - 60
Collet Increment mm	3	2	3	2
Sleeve Stroke mm	7	7	10	7
Max Drawbar Pull kN	22	22	34	34
Max Gripping Force kN	49	49	60	60
Max Speed rpm	7100	7100	6300	6300
Net Weight kg	13.5	13.5	29	29
Matching Cylinder	S1246	S1246	S1552/S1875	S1552/S1875
Varibore Collet Type	D-850	D-673	D-120	D-677
Spring Collet Type	D-286	D173E	D-853	D185E

DIMENSIONS	QCRL42 INCH	QCRL42 DIN	QCRL 54 INCH	QCRL60 DIN
Mount	140 A5 A6	140 A5 A6	170 A5 A6 A8	170 A5 A6 A8
A	113	113	143	143
B	149 143 143	149 143 143	177 184 175 175	164.5 180 165 165
C	30 30 30	30 30 30	36.5 46.5 31.5 31.5	36.5 46.5 31.5 31.5
D	60	60	60	60
E Max	M58 X 1.5	M58 X 1.5	M75 X 1.5	M75 X 1.5
F	65	65	82	82
G Max	17 23 23	17 23 23	15 5 21 21	14 5 21 21
G Min	10 16 16	10 16 16	5 -5 11 11	7 -2 14 14
H	165	165	220	220