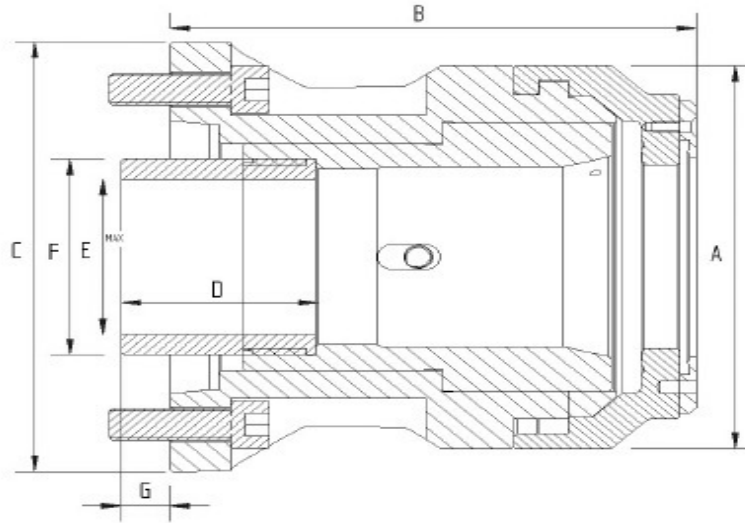


**COLLET CHUCK**  
**MODEL: QCRL/S 66/80**



**Quick Change Series Collet Chucks**

- Quick change design for 1st or 2nd operations
- Ideally suited for use with bar feeders
- Fixed length collet—no part movement
- Uses varibore, spring and master collets
- Exceptional accuracy in a small package



SPECIFICATIONS	QCRS 66	QCRS 80	QCRL 80
Gripping Range mm	3 - 66	12 - 80	12 - 80
Collet Increment mm	3	3	3
Sleeve Stroke mm	10	12	12
Max Drawbar Pull kN	39	44	44
Max Gripping Force kN	68	78	78
Max Speed rpm	4500	4500	4500
Net Weight kg	24	29	37
Matching Cylinder	S1875	S2091	S2091
Varibore Collet Type	D-285	D-175	D-660
Spring Collet Type	x	x	D-193 E

DIMENSIONS	QCRS 66	QCRS 80	QCRL 80
Mount	220 A8	A8	A8
A	162	196	196
B	158 152	168	210
C	230 220	220	220
D	80	80	80
E Max	M90 X 2	M90 X 2	M90 X 2
F	100	100	100
G Max	19 25	20	40
G Min	9 15	8	28