



kitagawa

Mega Thru-hole Front-mounting Air-operated Chuck

UPR series



Kitagawa Chuck for Oil Country



UPR



CHUCK

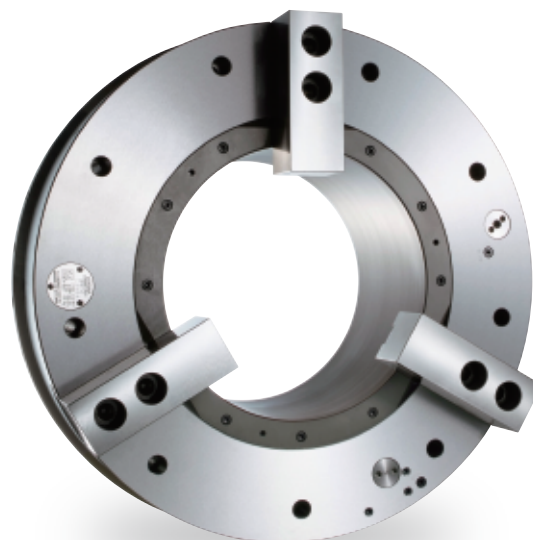
Features

• Smaller & Lighter models

Improve machining efficiency.
Light weight reduces wear and tear on spindle.

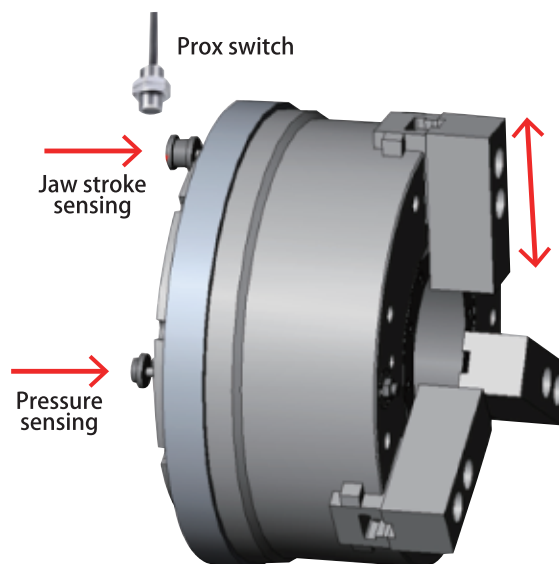
• Higher RPM Ratings

UPR is faster due to compact profile design.
Enables shortened cycle and machining time.



• Safety (Two built-in safety devices)

1. Jaw position is detected in order to prevent incomplete gripping.
2. Internal pressure drop is monitored to prevent accidental jaw release.

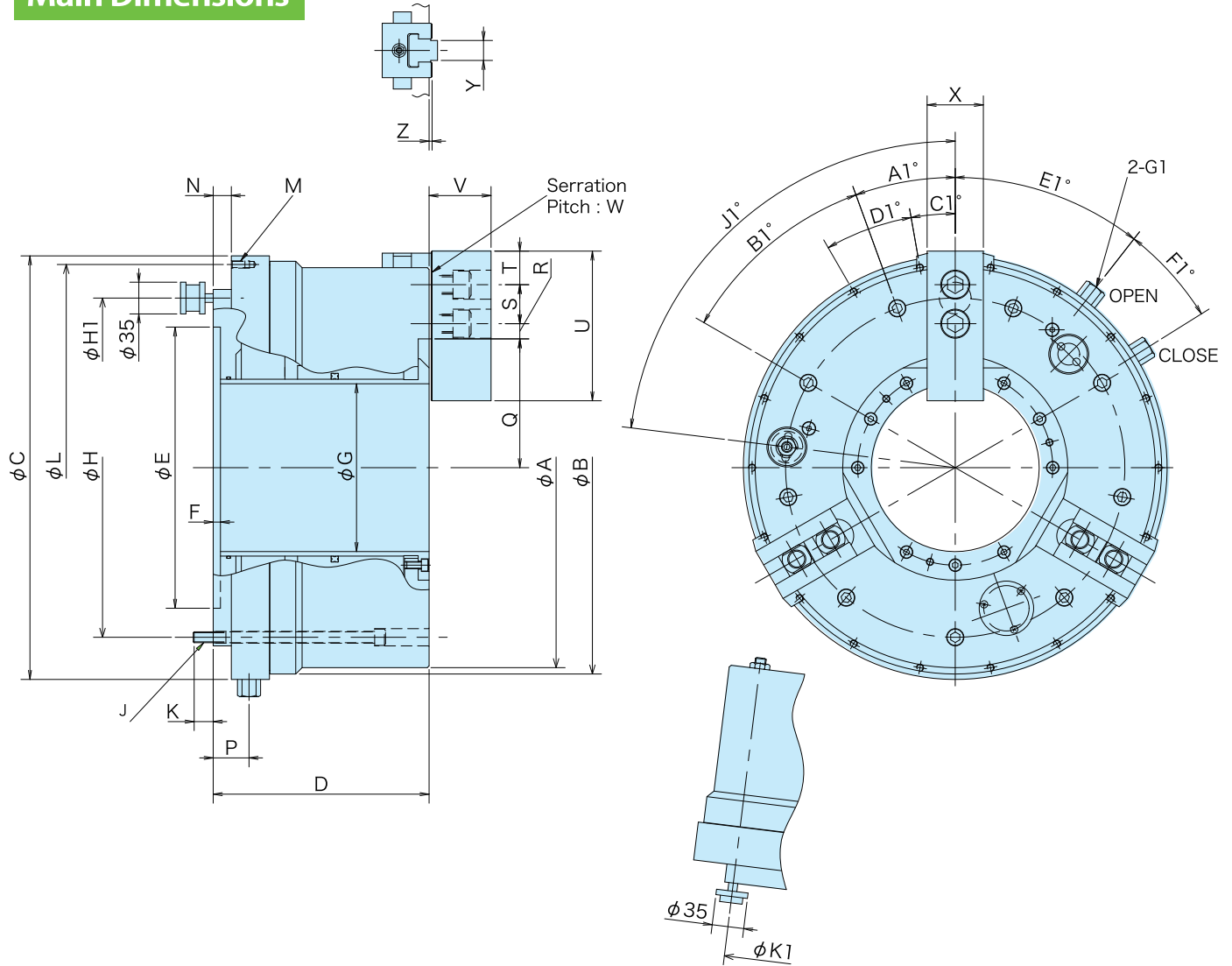


Specifications

Model	Thru-Hole mm (inch)	Jaw Stroke per jaw mm (inch)			Gripping range mm (inch)		Max Gripping Force kN	Max Speed min-1	Weight kg	Moment of inertia kg·m ²	Max pneumatic pressure Mpa
		Total	Rapid*	Gripping	Max.	min.					
UPR450	185 (7.28)	20 (0.78)	13 (0.51)	7 (0.27)	441 (17.36)	127 (5)	100	1300	195	5.5	0.6
UPR600	275 (10.82)	25 (0.98)	16.5 (0.65)	8.5 (0.33)	590 (23.22)	235 (9.25)	120	1100	365	19.7	0.5
UPR650	325 (12.79)	25 (0.98)	16.5 (0.65)	8.5 (0.33)	655 (25.78)	240 (9.44)	147	1000	476	32.2	0.6
UPR710	375 (14.76)	25 (0.98)	16.5 (0.65)	8.5 (0.33)	715 (28.14)	294 (11.57)	162	900	532	43.1	0.6
UPR910	560 (22.04)	25 (0.98)	16.5 (0.65)	8.5 (0.33)	915 (36.02)	475 (18.7)	162	600	735	103	0.5

*must not be used for clamping

Main Dimensions

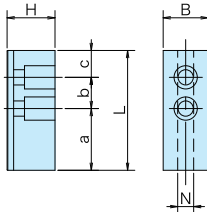


Model	A	B	C (0/-0.2)	D	E (H7)	F	G	H	J	K	L	M depth 20	N	P	Q		R	
															MAX	MIN	MAX	MIN
UPR450	441	455	467	238	310	8	185 (7.28)	374	9-M12	22	448	18-M8	20	39.5	142	122	34.75	16.75
UPR600	590	605	605	272	450	8	275 (10.82)	508	12-M12	22	585	18-M8	20	50	196.5	171.5	32.5	20.5
UPR650	655	675	685	283	510	8	325 (12.79)	580	12-M16	24	666	18-M8	20	50	223	198	38.5	20.5
UPR710	715	740	750	283	550	8	375 (14.76)	620	9-M16	24	730	18-M8	20	43	248	223	50.5	23.5
UPR910	915	915	925	291	700	10	560 (22.04)	800	12-M16	26	905	18-M8	33	56	342	317	50.5	23.5

Model	S	T	U	V	W	X	Y (h8)	Z	A1	B1	C1	D1	E1	F1	G1	H1	J1	K1
UPR450	43	37	165	68.3	1.5	62	22	3.3	20°	9×40°	10°	18×20°	38°	20°	Rc3/8	374	83°	374
UPR600	60	39.5	180	70.5	3	65	25.5	3.3	15°	12×30°	0°	18×20°	25°	20°	Rc3/8	508	60°	508
UPR650	60	40	209.5	81.3	3	75	30	3.3	15°	12×30°	0°	18×20°	25°	20°	Rc1/2	580	60°	580
UPR710	60	40	209.5	81.3	3	75	30	3.3	20°	9×40°	0°	18×20°	30°	15°	Rc1/2	620	45°	620
UPR910	60	40	209.5	81.3	3	75	30	3.3	15°	12×30°	0°	18×20°	30°	15°	Rc1/2	800	60°	800

Accessories

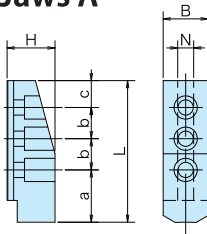
Soft Jaws



Chuck type	UPR450	UPR600	UPR650	UPR710	UPR910
No.	61P303047	61P385300	61P380707	61P380707	61P380707
Serration pitch	1.5	3	3	3	3
B	62	65	75	75	75
H	66	69.2	80	80	80
L	165 (210)	180 (283.5)	209.5 (310)	209.5 (340)	209.5 (340)
N	22	25.5	30	30	30
a	85 (130)	80.5 (184)	109.5 (210)	109.5 (240)	109.5 (240)
b	43	60	60	60	60
c	37	39.5	40	40	40
Gripping range	φ 127-φ 441 (φ 25 - φ 441)	φ 235-φ 590 (φ 25 - φ 590)	φ 240-φ 655 (φ 25 - φ 655)	φ 294-φ 715 (φ 25 - φ 715)	φ 475-φ 915 (φ 209-φ 915)

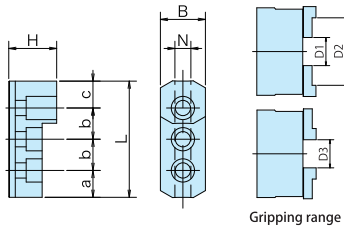
() dimensions show Long version

Hard Jaws A



Chuck type	UPR450	UPR600	UPR650	UPR710	UPR910
No.	61P822116	61P822117	61P822118	61P822118	61P822118
Serration pitch	1.5	3	3	3	3
B	62	65	75	75	75
H	66	69.2	80	80	80
L	191	222.5	240	240	240
N	22	25.5	30	30	30
a	68	72	80	80	80
b	43	60	60	60	60
c	37	30.5	40	40	40
Gripping range	φ 59-φ 102 φ 145-φ 188	φ 123-φ 158 φ 243-φ 278	φ 160-φ 207 φ 280-φ 327	φ 216-φ 281 φ 336-φ 401	φ 404-φ 469 φ 524-φ 589

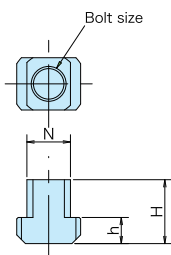
Hard Jaws B



Gripping range

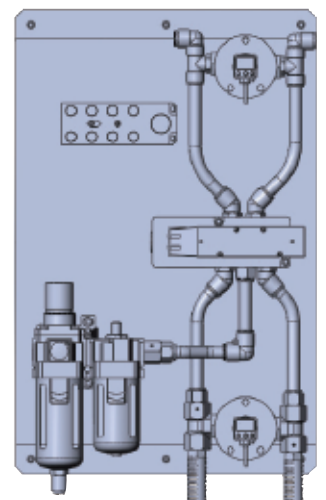
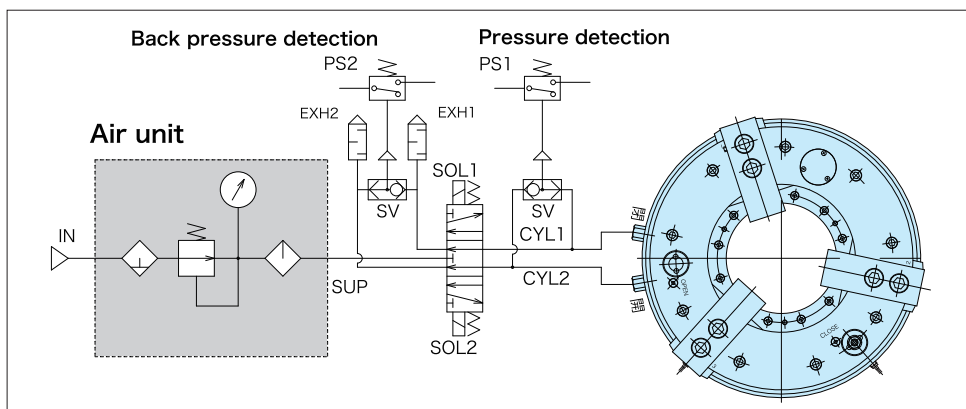
Chuck type	UPR450	UPR600	UPR650	UPR710	UPR910
No.	61P822119	61P822120	61P822121	61P822121	61P822121
Serration pitch	1.5	3	3	3	3
B	62	65	75	75	75
H	66	69.2	80	80	80
L	149	181.5	201	201	201
N	22	25.5	30	30	30
a	21	22	29	29	29
b	43	60	60	60	60
c	42	39.5	52	52	52
Gripping range D1	φ 152-φ 196 φ 239-φ 282	φ 233-φ 258 φ 343-φ 378	φ 262-φ 309 φ 382-φ 429	φ 318-φ 383 φ 438-φ 503	φ 506-φ 571 φ 626-φ 691
Gripping range D2	φ 325-φ 368 φ 411-φ 454	φ 455-φ 490 φ 575-φ 610	φ 501-φ 548 φ 621-φ 668	φ 557-φ 622 φ 677-φ 742	φ 745-φ 810 φ 865-φ 930
Gripping range D3	φ 111-φ 154 φ 197-φ 240	φ 188-φ 223 φ 308-φ 343	φ 216-φ 263 φ 336-φ 383	φ 272-φ 337 φ 392-φ 457	φ 460-φ 525 φ 580-φ 645

T-nuts



Chuck type	UPR450	UPR600	UPR650	UPR710	UPR910
No.	61P470917	61P445783	61P446153	61P446153	6P446153
bolt size	M20 × 45	M20 × 45	M24 × 60	M24 × 60	M24 × 60
Tightening torque (N·m)	402	402	666	666	666
N	22	25.5	30	30	30
H	31.5	29.5	44	44	44
h	10.5	10.5	18	18	18

For the air circuit diagram and Air panel

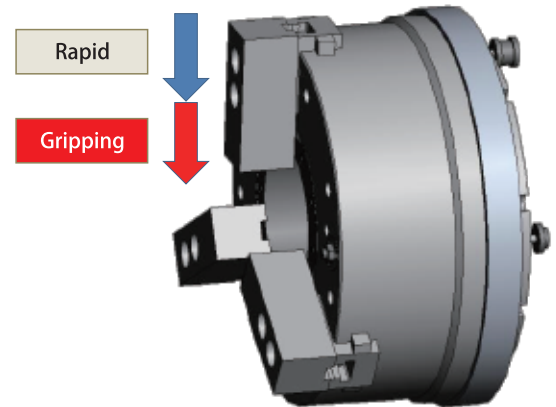




Standard Function

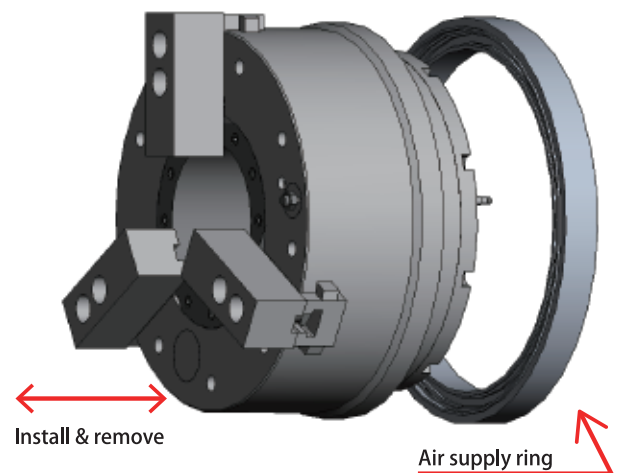
1) Long Jaw stroke and 2 – stage stroke

- Long jaw stroke – Allows for several sizes of pipe to be gripped in one set-up. Work pieces with multiple diameters may also be gripped.
- 2-stage stroke – Two stroke speeds, rapid traverse and grip stroke, enable shortened clamping time.



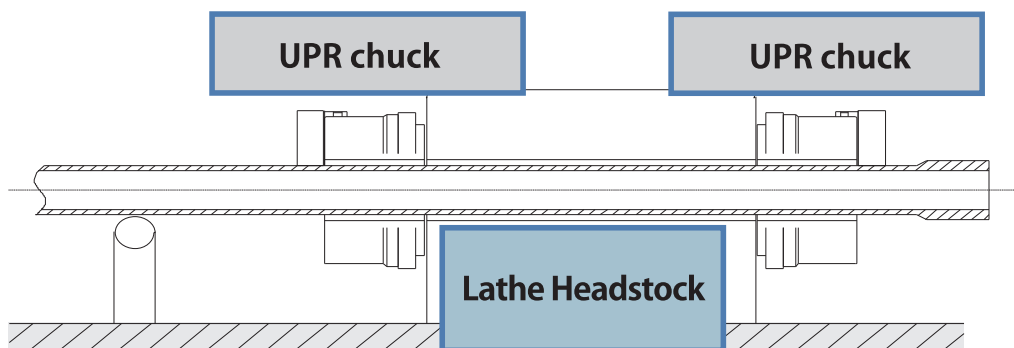
2) Easy Installation and Maintenance due to simple construction

- Easy install and removal from machine.
- Easy adjustment of air supply ring. Readjustment is not necessary after initial install.



3) Built-in air cylinder

- Application for Oil pipe, which can use full capacity of thru-hole



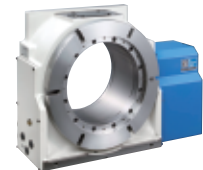


CHUCK

UPR series

Kitagawa Products

~ Machine Tool Accessories ~



America Contact

- KITAGAWA - NORTHTECH INC.**
Tel. +1 847-310-8787 Fax. +1 847-310-9484
- TECNARA TOOLING SYSTEMS, INC.**
Tel. +1 562-941-2000 Fax. +1 562-946-0506

301 E. Commerce Dr, Schaumburg, IL. 60173 USA
<http://www.kitagawa.com>
12535 McCann Dr, Santa Fe Springs, California 90670 USA
<http://www.tecnaratools.com>

Europe Contact

- KITAGAWA EUROPE LTD.**
Tel. +44 1725-514000 Fax. +44 1725-514001
- KITAGAWA EUROPE GmbH**
Tel. +49 2102-123-78-00 Fax. +49 2102-123-78-69
- KITAGAWA EUROPE GmbH Poland Office**
Tel. +48 607-39-8855 Fax. +48 32-749-5918
- KITAGAWA EUROPE GmbH Czech Office**
Tel. +420 603-856-122 Fax. +420 549-273-246

Unit 1 The Headlands, Downton, Salisbury, Wiltshire SP5 3JJ, United Kingdom
<http://www.kitagawaeurope.com>
Borsigstrasse 3, 40880, Ratingen Germany
<http://www.kitagawaeurope.de>
44-240 Zory, ul. Niepodleglosci 3 Poland
<http://www.kitagawaeurope.de>
Lysicka 3, 621 00 Brno, Czech Republic
<http://www.kitagawaeurope.de>

Asia Contact

- KITAGAWA INDIA PVT LTD.**
Tel. +91 20-6500-5981 Fax. +91 20-2615-0588
- KITAGAWA (THAILAND) CO.,LTD. Bangkok Office**
Tel. +66 2-712-7479 Fax. +66 2-712-7481
- KITAGAWA IRON WORKS CO.,LTD. Singapore Branch**
Tel. +65 6838-4318 Fax. +65 6408-3935
- KITAGAWA IRON WORKS (SHANGHAI) CO.,LTD.**
Tel. +86 21-6295-5772 Fax. +86 21-6295-5792
- DEAMARK LIMITED**
Tel. +886 2-2393-1221 Fax. +886 2-2395-1231
- KITAGAWA KOREA AGENT CO.,LTD.**
Tel. +82 2-2026-2222 Fax. +82 2-2026-2113

Lotus House East, Lane 'E' North Main Road, Koregaon Park, Pune 411 001, Maharashtra, India
9th FL, Home Place Office Building, 283/43 Sukhumvit 55Rd. (Thonglor 13),Klongton-Nua, Wattana, Bangkok 10110, Thailand
#02-01 One Fullerton, 1 Fullerton Road, Singapore 049213
Room308 3F Building B. Far East International Plaza, No.317 Xian Xia Road, Chang Ning, Shanghai, 200051 China
No. 6, Lane 5, Lin Sen North Road, Taipei, Taiwan
<http://www.deamark.com.tw>
803 Ho, B-Dong, Woolim Lion's Valley, 371-28 Gasan-Dong, Gumcheon-Cu, Seoul, Korea
<http://www.kitagawa.co.kr>

Oceania Contact

- DIMAC TOOLING PTY.LTD.**
Tel. +61 3-9561-6155 Fax. +61 3-9561-6705

61-65 Geddes Street, Mulgrave, Victoria, 3170 Australia
<http://www.dimac.com.au>

Japanese speaker available

kitagawa <http://www.mta.kiw.co.jp>

KITAGAWA IRON WORKS CO., LTD.

77-1 Motomachi, Fuchu-shi, Hiroshima-pref. 726-8610, Japan
Tel. +81 847-40-0526 Fax. +81 847-45-8911

- Specifications and outside appearance are subject to change without notice due to ongoing research and development.
 - The color of the actual product may be different from the catalogue's due to printing matters.
 - Catalogue contents as of 2013.10
 - The products herein are controlled under Japanese Foreign Exchange and Foreign Trade Control Act.
- In the event of importing and/or exporting the products,
you are obliged to consult KITAGAWA as well as your government for the related regulation prior to any transaction.