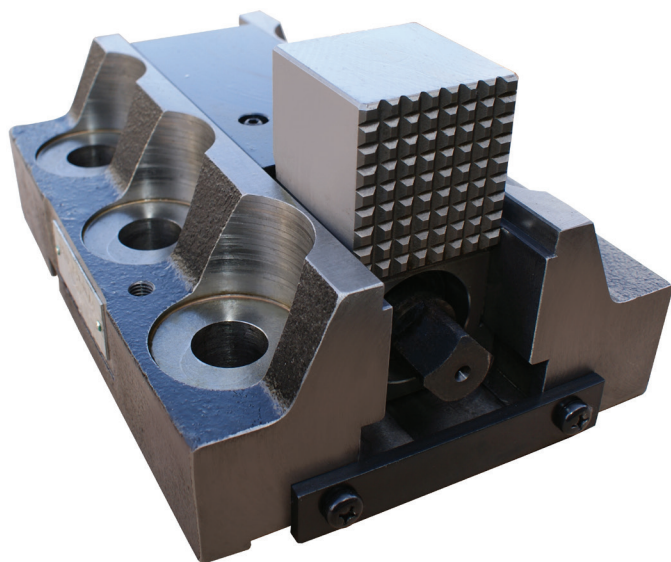


# BM SERIES – BORING MILL JAWS

THE  
BEST.

## Boring Mill Jaws for Ultimate Workholding Flexibility

Typically used in conjunction with face plates, Boring Mill Jaws give you the flexibility to build a multi-jaw large workholding system designed to grip round or irregular shaped parts.



- Build a large 3, 4, 6 or even 7 jaw workholding system
- Suitable for large Vertical turning lathes, boring machines, milling machines and jig installations
- Used in conjunction with our FBK series faceplates up to 3 meters in diameter
- Contact us to discuss your requirements

### BORING MILL JAWS TECHNICAL SPECIFICATIONS, MODELS AND DATA

4 pcs. (1 set)

	Jaw type	Gripping force (kN)	Input torque (N·m)	Weight (Kg)	Standard Accessory	Optional Soft Jaw
BM-3T	Solid jaw	29	392	19	T-handle	-
BM-3T-2P	2-Piece jaw	29	392	21	T-handle	SJ-155
BM-4T	Solid jaw	39	441	26	"Ratchet handle (19D) Socket SKB22B19B"	-
BM-4T-2P	2-Piece jaw	39	441	28	"Ratchet handle (19D) Socket SKB22B19B"	SJ-155
BM-6T	Solid jaw	59	686	30	"Ratchet handle (19D) Socket SKB22B19B"	-
BM-7T	Solid jaw	68	735	55	"Ratchet handle (25.4D) Socket SKB26D25.4B"	-
BM-7T-2P	2-Piece jaw	68	735	60	"Ratchet handle (25.4D) Socket SKB26D25.4B"	SJ-170

3 JAWS

4 JAWS

6 JAWS

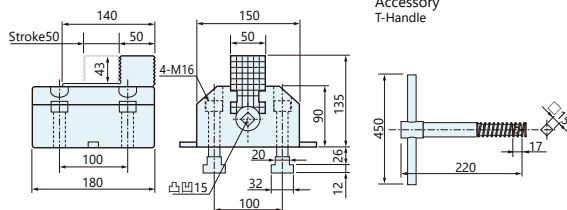
7 JAWS

# BM SERIES TECHNICAL SPECIFICATIONS

THE  
BEST.

## Boring Mill Jaws Configuration Options, Models and Dimensions

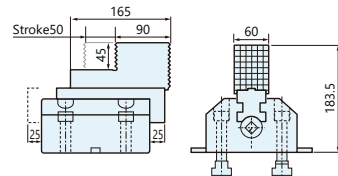
### BM-3T



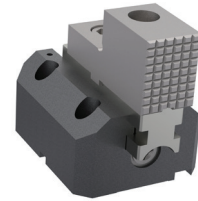
Gripping force : 29kN  
(Input torque : 392N·m)  
Weight : 19kg



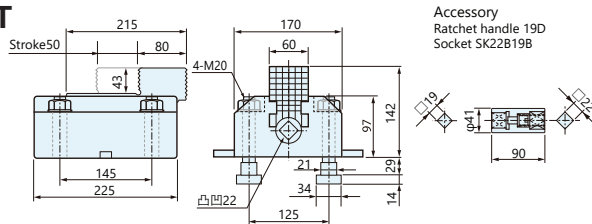
**BM-3T-2P**  
(2-Piece Jaw type)  
Optional soft jaw : SJ-155



Gripping force : 29kN  
(Input torque : 392N·m)  
Weight : 21kg



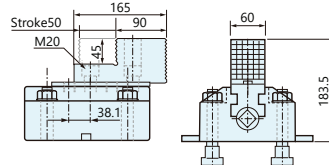
### BM-4T



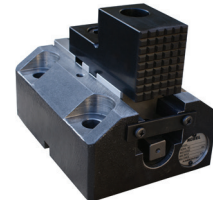
Gripping force : 39kN  
(Input torque : 441N·m)  
Weight : 26kg



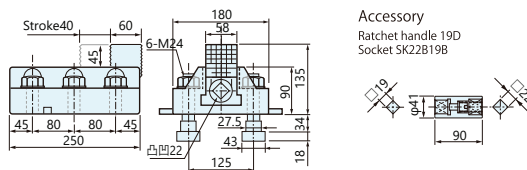
**BM-4T-2P**  
(2-Piece Jaw type)  
Optional soft jaw : SJ-155



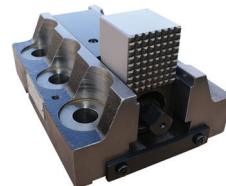
Gripping force : 39kN  
(Input torque : 441N·m)  
Weight : 28kg



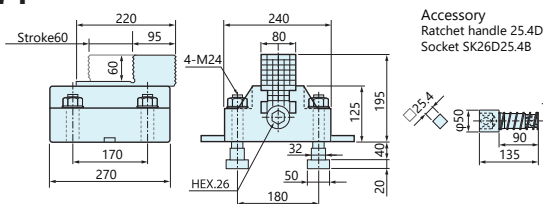
### BM-6T



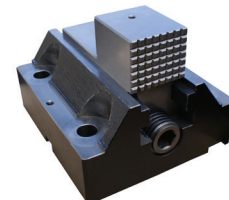
Gripping force : 59kN  
(Input torque : 686N·m)  
Weight : 30kg



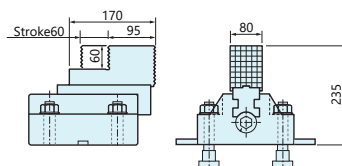
### BM-7T



Gripping force : 68kN  
(Input torque : 735N·m)  
Weight : 55kg



**BM-7T-2P**  
(2-Piece Jaw type)  
Optional soft jaw : SJ-170



Gripping force : 68kN  
(Input torque : 735N·m)  
Weight : 60kg

