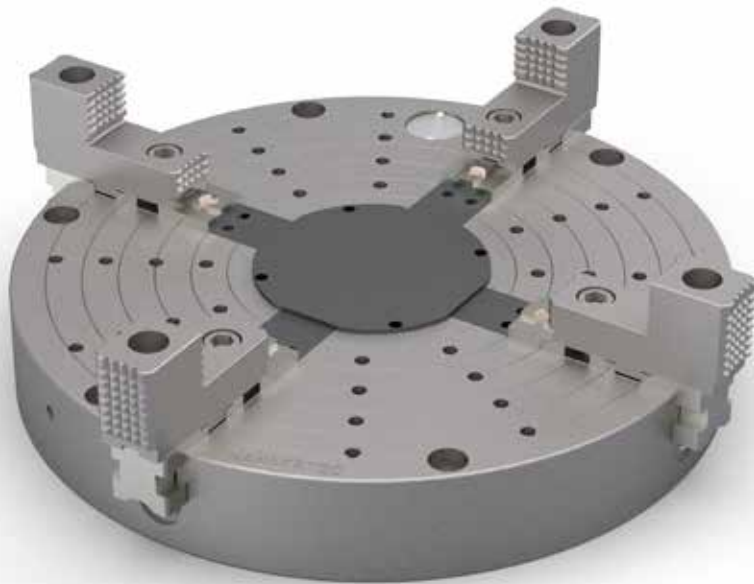


# TI SERIES 4 JAW INDEPENDENT CHUCK

THE  
BEST.

## Low Profile, 4 Jaw Independent Chuck for Milling



The TI Series are low profile, and lightweight 4 jaw Independent Chucks for milling applications. Their low profile feature makes them ideal for milling machines that have compact workpiece envelopes.

- Chuck sizes: 12" – 39" (300 – 1000 mm)
- Used on vertical and horizontal milling machines
- Sealed against chips and coolant
- Can be used on tombstone or 5 axis NC Rotary Tables
- Designed to grip irregular shaped parts

LOW PROFILE

4 JAW

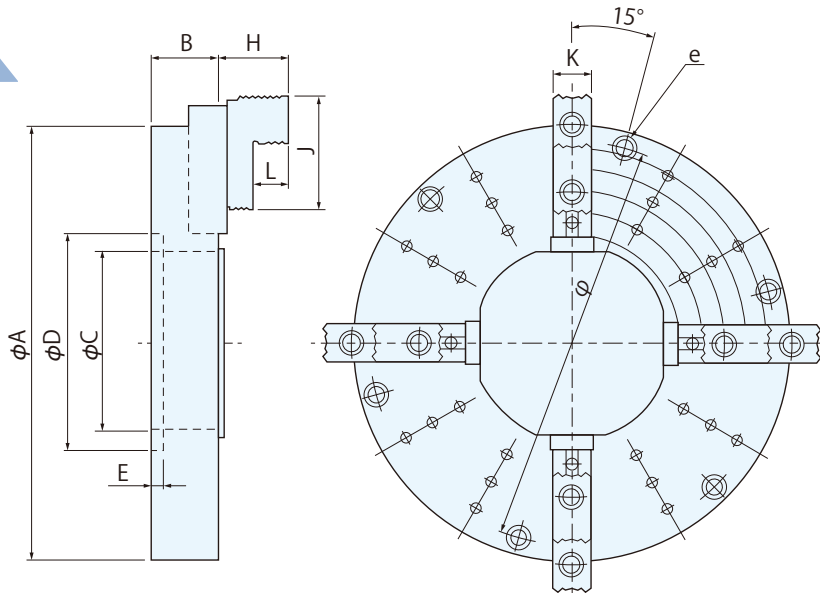
CHUCK

MILLING

# TI SERIES TECHNICAL SPECIFICATIONS

THE  
BEST.

Low Profile, 4 Jaw  
Independent Chuck  
for Milling and Small  
Work Piece Envelopes



**CAUTION**

Note)  
This chuck is designed on the assumption that it is installed on a tombstone and table with sufficient rigidity. Accordingly, it cannot be used being directly installed on the spindle of a lathe.

Model	A	B	C	Dh7	E	H	J	K	L	d	e(Equally divided)
TI300	300	65	125	130	14	43	80	30	20	275	4-M12
TI400	400	70	180	185	15	58	110	35	28	375	6-M12
TI500	500	80	146	150	14	78	130	44	40	465	6-M16
TI600	600	85	210	215	19	78	130	44	40	565	6-M16
TI800	800	120	295	300	22.5	105	140	69	46	760	6-M20
TI1000	1000	125	410	420	25	105	140	69	46	960	6-M20

Model	Allowable input torque	Gripping force per one jaw	Gripping range	Rotation speed	Weight	Optional soft jaw
	(N·m)	(kN)	(φmm)	(min-1)	(kg)	
TI300	123	15	80-260	1800	25	SJ-85
TI400	176	19	95-350	1450	50	SJ-115
TI500	245	23	135-450	1150	90	SJ-135
TI600	245	23	220-540	950	120	SJ-135
TI800	392	29	310-725	600	300	SJ-160
TI1000	392	29	430-920	450	420	SJ-160